

Stanford Magnetic Filter

Stanford Magnets has produced magnets for industry for over 20 years and developed a reputation as one of the go-to sources of mission-critical materials for many important technical applications.

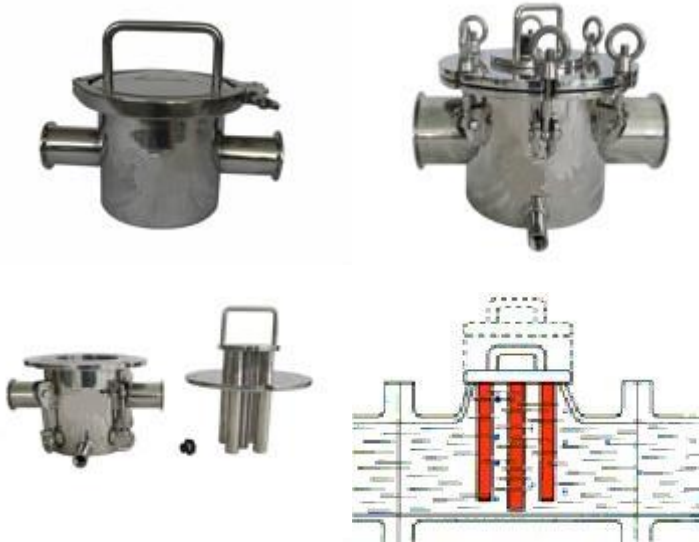
We also deliver reliability in the form of innovative solutions for the prevention of metal contamination in the food industry. This avoids costly production interruptions, damage claims and product recalls. During the production process, metal parts can enter food products such as baby food, fruit juice, frozen or canned vegetables, spices, flour, sauces, grain, powdered milk, sugar or chocolate. These can be easily removed with magnets.



Below are a few of our typical products. Also, customized product is available.

Magnetic filters (Magnetic Liquid Traps)

Magnetic Liquid Trap is a magnetic separator designed to separate the ferrous contaminants in liquid, semi-liquid materials and air conveying powder in order to purify these materials in the production process. Strong bar separators inside the liquid trap housing filtrates the flow and picks out the unwanted ferrous metal.



Construction:

Stanford Magnetic Liquid Traps consist of a group of strong magnetic grates and a housing outside. A pair of inlet and outlet makes it possible to connect with existing processing line by various connection types.

Usually these liquid traps are simply mounted to the existing pipeline via flanged or threaded ends. Easy access is also possible using the quick release clamp.

Features:

1. Finishing: Fine polished and good welding to meet food grade.
2. Material of shell: SS304, SS316 and SS316L seamless steel tube
3. Working Temperature: Standard working temperature of liquid trap magnets is $\leq 80^{\circ}\text{C}$, but if high temperature is required, we can offer up to 350°C to meet your special requirements
4. Compress resistance: 6 kilograms (0.6Mpa) with quick release clamp while 10 kilograms (1.0Mpa) with flange.
5. As rare earth magnets are extremely powerful and tramp metal is very difficult to remove by hand. We are ready to offer you an easy-clean design.
6. To meet the demand of preserving heat, we offer you a special design, with insulation layer added.
7. Customer designs, specifications can be fulfilled.

Application area:

These magnetic liquid traps are suitable for the products that is Liquid, Semi-liquid and air-conveying powder

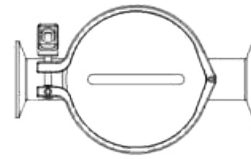
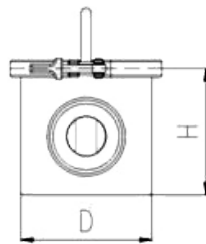
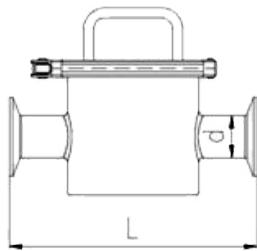
How to do cleaning?

Stanford Magnetic Liquid Traps also should be cleaned periodically for the most efficient performance. Release the cover and hand out the magnetic rods group, and then wipe the tramp metal from stainless steel shell one by one. Use extreme caution and wear gloves during the process.

How to select our products?

Please advise us the above necessary information to make enquiry. If you aren't in a position to offer such information, please feel free to contact our engineer and acquaint us with the application environment and material condition.

Quick release clamp inlet/outlet



Part#	Dimensions (mm)				No. of Magnetic bars
	D	d	H	L	
SM-FT100/25CC	100	25.4	150	220	3
SM-FT100/38CC	100	38.1	150	220	3
SM-FT100/50CC	100	50.8	150	220	3
SM-FT100/76CC	100	76.2	150	220	3
SM-FT114/25CC	114	25.4	150	250	5
SM-FT114/38CC	114	38.1	150	250	5
SM-FT114/50CC	114	50.8	150	250	5
SM-FT114/76CC	114	76.2	150	250	5
SM-FT150/25CC	159	25.4	150	300	5
SM-FT150/38CC	159	38.1	150	300	5

SM-FT150/50CC	159	50.8	150	300	5
SM-FT150/76CC	159	76.2	150	300	5
SM-FT150/100CC	159	101.6	150	300	5
SM-FT200/25CC	219	25.4	200	360	7
SM-FT200/38CC	219	38.1	200	360	7
SM-FT200/50CC	219	50.8	200	360	7
SM-FT200/76CC	219	76.2	200	360	7
SM-FT200/100CC	219	101.6	200	360	7
SM-FT150/25CF	159	32	150	300	5
SM-FT150/32CF	159	38	150	300	5
SM-FT150/40CF	159	45	150	300	5
SM-FT150/50CF	159	57	150	300	5
SM-FT150/65CF	159	76	150	300	5
SM-FT200/50CF	219	57	200	350	7
SM-FT200/65CF	219	76	200	350	7
SM-FT200/80CF	219	89	200	350	7
SM-FT200/100CF	219	108	200	350	7

***Remark:**

"FT" stand for ferrous traps

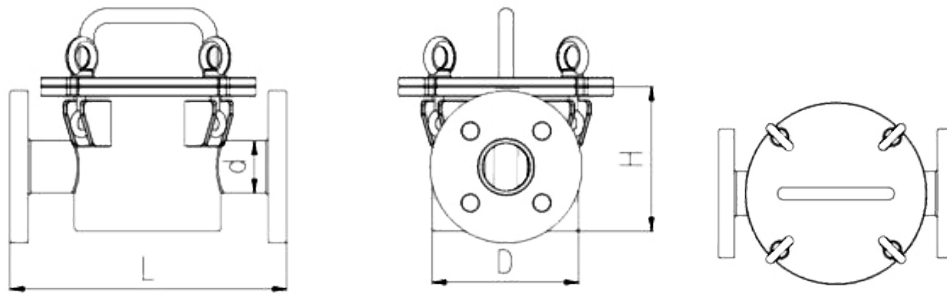
"CC" stand for quick release clamp style, inlet and outlet is quick release clamp

"CF" stand for quick release clamp style, inlet and outlet is round flange

****Please give us the info below if you'd like to have a customized product:**

- Interface/connection type and diameter
- Pipeline pressure
- Operating temperature
- Installation space
- Magnetic field strength
- characteristic & name of material; PH; Particle size; fluidity; etc
- Other special designs

Flange inlet/outlet



Part#	Dimensions (mm)				No. of Magnetic bars
	D	d	H	L	
SM-FT150/25	159	32	150	300	5
SM-FT150/32	159	38	150	300	5
SM-FT150/40	159	45	150	300	5
SM-FT150/50	159	57	150	300	5
SM-FT150/65	159	76	150	300	5
SM-FT200/50	219	57	200	350	7
SM-FT200/65	219	76	200	350	7
SM-FT200/80	219	89	200	350	7
SM-FT200/100	219	108	200	350	7
SM-FT250/80	250	89	250	400	9

SM-FT250/100	250	108	250	400	9
SM-FT250/125	250	133	250	400	9
SM-FT250/150	250	159	250	400	9
SM-FT300/125	300	133	300	450	11
SM-FT300/150	300	159	300	450	11
SM-FT300/200	300	219	300	450	11

***Remark:**

"FT" stand for ferrous traps

"CC" stand for quick release clamp style, inlet and outlet is quick release clamp

"CF" stand for quick release clamp style, inlet and outlet is round flange

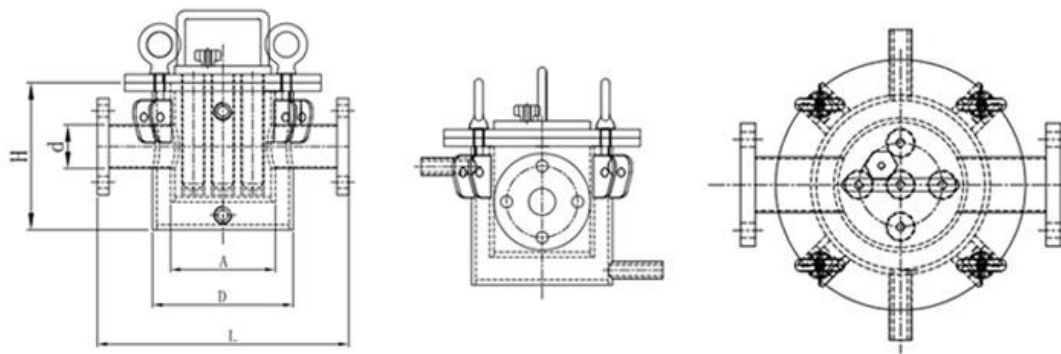
****Please give us the info below if you'd like to have a customized product:**

- h) Interface/connection type and diameter
 - i) Pipeline pressure
 - j) Operating temperature
 - k) Installation space
 - l) Magnetic field strength
 - m) characteristic & name of material; PH; Particle size; fluidity; etc
- Other special designs

Jacket design for Temperature-preservation

Many products will coagulate when the temperature decreases. Like Chocolate, it need to preserve high temperature to ensure the free-flowing status. So a design of temperature-preserving Magnetic separator is necessary to realize an ideal result in filtering ferrous contaminants. That is Jacket design.





Dimensions (mm)

Part#	Dimensions (mm)					No. of Magnetic bars
	D	A	d	H	L	
SM-FTD125/25	168	133	32	185	300	5
SM-FTD125/32	168	133	38	185	300	5
SM-FTD125/40	168	133	45	185	300	5
SM-FTD125/50	168	133	57	185	300	5
SM-FTD125/65	168	133	76	185	300	5
SM-FTD150/50	219	159	57	220	360	7
SM-FTD150/65	219	159	76	220	360	7
SM-FTD150/80	219	159	89	220	360	7
SM-FTD150/100	219	159	108	220	360	7

***Remark:**

"FT" stand for ferrous traps

"CC" stand for quick release clamp style, inlet and outlet is quick release clamp

"CF" stand for quick release clamp style, inlet and outlet is round flange

****Please give us the info below if you'd like to have a customized product:**

- n) Interface/connection type and diameter
 - o) Pipeline pressure
 - p) Operating temperature
 - q) Installation space
 - r) Magnetic field strength
 - s) characteristic & name of material; PH; Particle size; fluidity; etc
- Other special designs